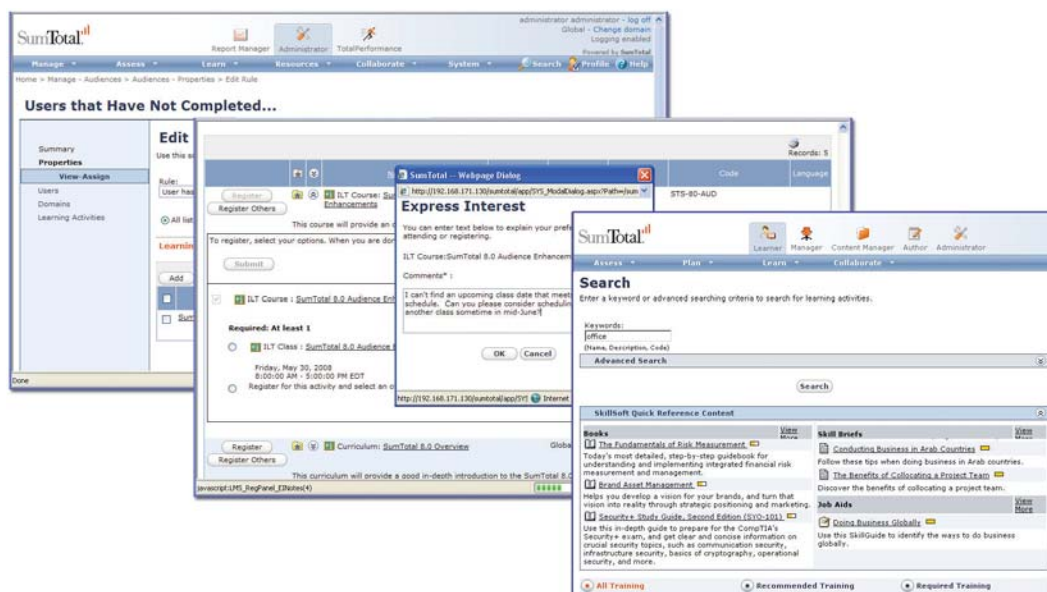


TotalLMS is the backbone of SumTotal's learning management capabilities. The flexibility, power and ease-of-use of TotalLMS enables SumTotal Systems to offer the industry's leading Learning Management System (LMS). The platform offers radically easier administration of learning activities, user organizations, e-commerce, reporting and compliance, as well as unique flexibility with its Open Activity Architecture. TotalLMS is also the platform for capturing and managing informal learning, allowing users to collaborate and tap into expert communities via engaging Web 2.0 technologies.



Unique, best-of-breed product capabilities

- Open Activity Architecture, revolutionary functionality for creating and managing learning that meets an organization's way of doing business
- TotalVersioning™ module, to tag, update and manage revisions and changes to thousands of curriculums, classes and training manuals
- Flexibility of multiple structures for user and data management
- Unique integration capabilities, including the industry's first OLSA integration with SkillSoft® libraries
- Anywhere, anytime access to critical information via the TotalAccess™ module
- Ability to build online communities via threaded discussions and 'Ask The Expert' capability, extending learning to informal and Web 2.0 environments

Increase your productivity with a solution fitting your business

- Create and deploy true blended learning programs and single activities based on rules
- Easily create complex curriculums using Open Activity Architecture
- Proven scalability that supports customers with 200 to 2 million users
- Unique integrations with solutions such as Adobe® Connect™, Mimeo and SkillSoft® OLSA

Develop your talent – internally and externally

- Identify the talent needs, capabilities and gaps in your organization
- Easily assign competency requirements to various levels of your organization, linking competencies directly to relevant learning activities
- Quickly identify individuals within your organization with specific competency profiles using drag-and-drop reporting capabilities

Better user experience increasing engagement and usage

- Engaging, configurable and task-focused Home Page that puts the user at the center of the experience
- Optimize administrative processes such as gauging learning activity interest and assigning compliance training with targeted efficiency
- Segment user populations into audiences for easier, more flexible management and tracking
- Federated search and fast synchronization with SkillSoft catalog through OLSA

Provide instant access to higher quality information for business visibility

- View integrated learning and performance data on a single page through a unified dashboard
- Faster, more robust and more flexible reporting, customizable with easy filtering and drag-and-drop capabilities
- Easy integration to business systems through Web Services

Effectively strengthen performance of partners and customers

- Provide multiple payment options giving you flexibility for partner/customer training business models
- Utilize robust commerce capabilities to enroll and pay for learning activities including multi-currency support and discount management
- Track performance and certifications against business results effectively
- Consolidate management of decentralized groups and data into one system, while retaining their individual workflows and structures

Maintain audit readiness

- Full support for learning data auditing, including electronic signature methods required by auditing agencies such as US FDA and FAA
- Confidently pass audits with generated reports that demonstrate compliance with specific training requirements and proof of the validity of the data
- Assign time-based learning requirements and certifications across various segments of your user population
- Reduce liability of risks and costs by preventing compliance and certification lapses with notifications and expiration status

For more information, please contact us at +1 650 934 9500, or toll-free at +1 866 768 6825.